



TOXLEARN4EU

SUMMER SCHOOL

Hasselt, Belgium

30/6 – 6/7/2023

Guidance notes

Venue

Universiteit Hasselt - Campus Diepenbeek, Agoralaan gebouw D, 3590 Diepenbeek, België

<https://www.uhasselt.be/en/about-hasselt-university/contact#anch-5ae-campus-diepenbeek>



Good to know

Currency Euro

Time Zone GMT+1

Electricity In Belgium, power plugs and sockets (outlets) of type E are used. The standard voltage is 230 V at a frequency of 50 Hz.

Bring your laptop for the group assignment.

How to get to Hasselt

Plane – public transport

The best is to fly to Brussels – Zaventem airport and from there take a direct train to Hasselt

<https://www.brusselsairport.be/en/passengers/access-parking/train>

By bus

From Maastricht central station you can take the direct bus 20a or 45 to either the Campus Diepenbeek or city centre

<https://www.delijn.be/en/routeplanner/>

Hasselt tourist info

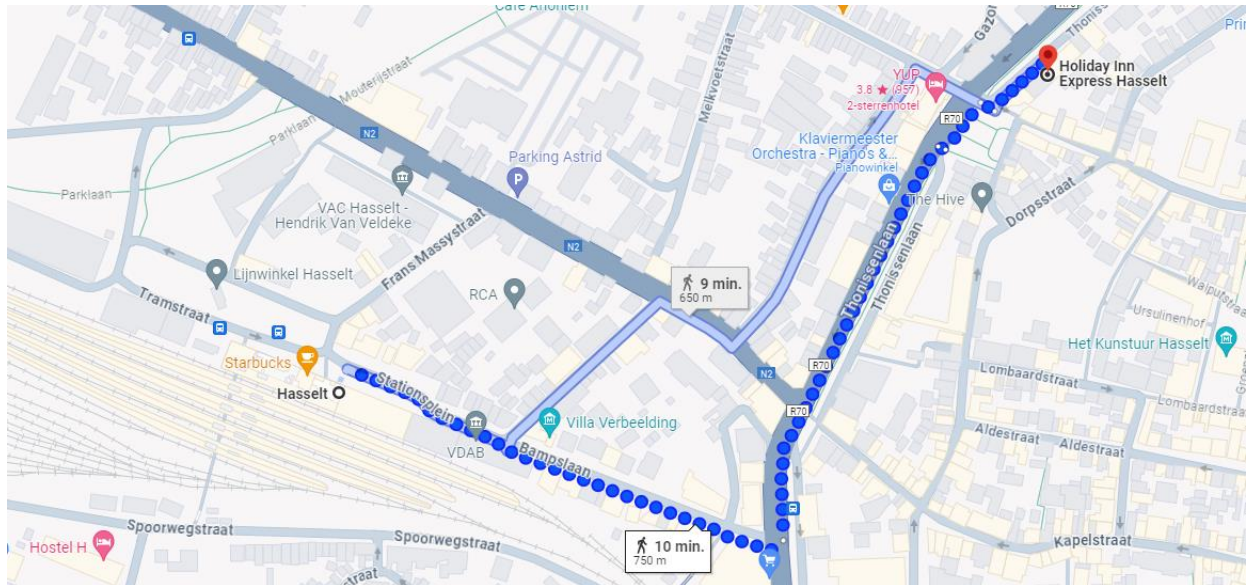
<https://www.visithasselt.be/en>

How to get to Holiday Inn Express hotel

It is about 10min to walk from Hasselt station to the Holiday Inn Express hotel
Thonissenlaan 37, 3500 Hasselt, België

<https://www.ihg.com/holidayinnexpress/hotels/nl/nl/hasselt/hshtl/hoteldetail>

Hotel rooms for students and guest lecturers have been reserved on their names.



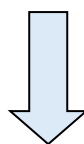
How to get to Campus Diepenbeek

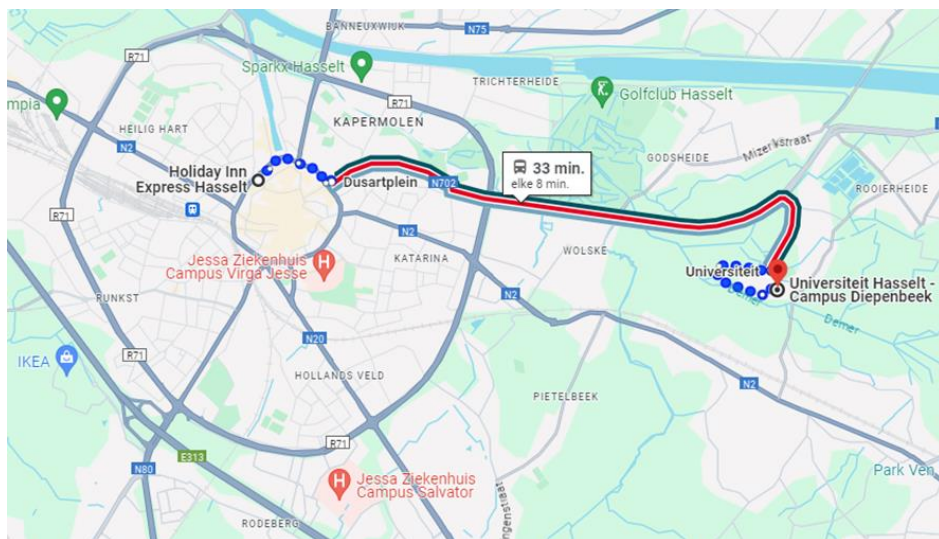
You can reach Campus Diepenbeek via Lines 20A, 20B, 36a, 44 and 45. There are two bus stops on the campus: 'Universiteit' near the main building (Building D and Building E) and 'Agoralaan' near Building C (BIOMED). **The summer school will take place in Building D**

A bus departs from Hasselt station to the campus at least every 15 minutes: Line 45 towards Maastricht, Line 20A towards Maastricht, or Line 36a Genk via Diepenbeek.

More information can be obtained from De Lijn Info on +32 70 220 200 (0.30 euros per minute), the [Lijnwinkel stores](#) or www.delijn.be. There is an information office on Hasselt station's main square.

[Real-time information on the Diepenbeek Universiteit stop](#)



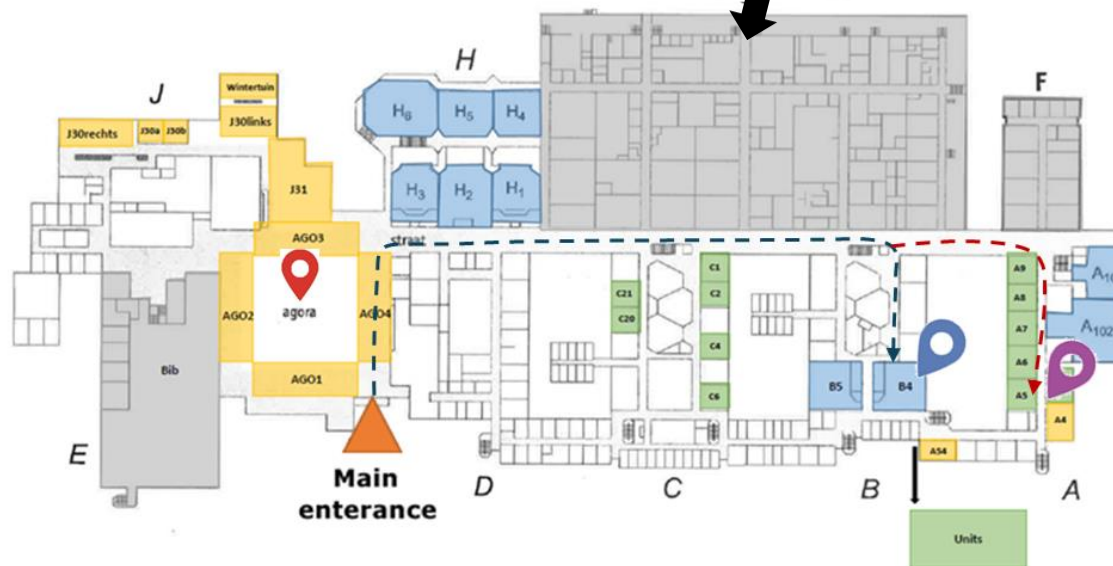
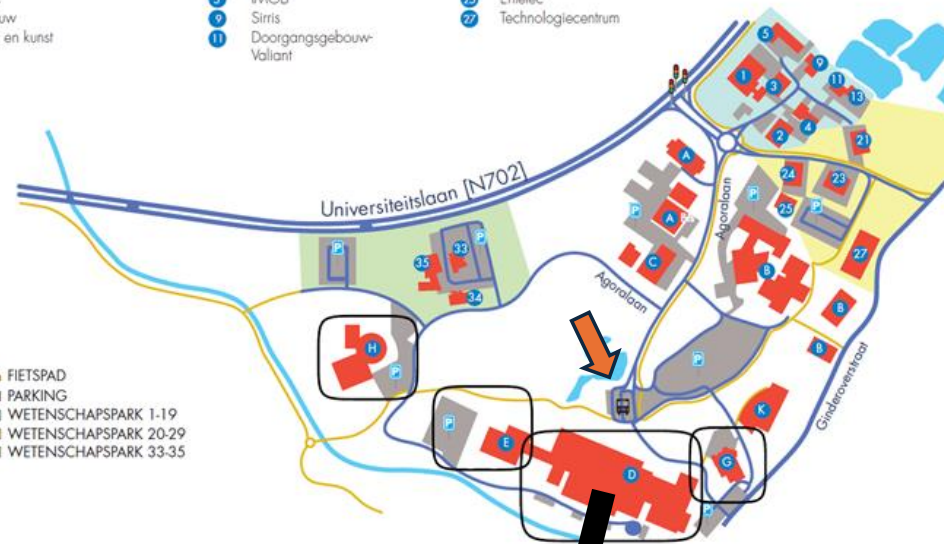



- A UHasselt-BIOMED A | UHasselt-REVAL
- ADLON
- A Bib
- B BioVille
- C UCLL
- D UHasselt-BIOMED C
- E UHasselt-hoofdgebouw
- F UHasselt-architectuur en kunst
- G Filalink - Fuilbunker
- H PXL - UHasselt
- I Basic-Fit


- 1 UHasselt-HMO/IMOME C
- 2 UHasselt-EDM
- 3 Sirris
- 4 Androme Group
- 5 IMOB
- 6 Sirris
- 7 Doorgangsgebouw-Valiant

- 13 Doorgangsgebouw
- 21 UCLL
- 22 Icasa
- 24 Osudio
- 25 Entelec
- 27 Technologiecentrum

- 33 Confederatie bouw
- 34 Applicatiecentrum beton en bouw
- 35 Limtec



 **Pick-up point for the students on the first morning; Monday 1st of July at 8:50h**

 Way to lecture room B4

 Lecture room B4

 Way to PBL room A5

 PBL room A5



Programme

Day	Sat 29/6	Sun 30/6	Mon 1/7	Tues 2/7	Wed 3/7	Thur 4/7	Fri 5/7	Sat 6/7	
AM	S T U D E N T S	09:00-12:00 <i>(bus leaves at 08:00)</i>	09:00-09:30 Welcome by U Hasselt (UH) 09:30-10:15 General Introduction to Risk Assessment (RA) <i>Sabine Langie, UM (BE)</i> 10:15-11:00 New emerging hazards <i>Helga Stopper, Wurzberg University (DE)</i>	08:30-12:00 <i>(bus leaves at 07:30)</i>	09:00-09:45 Hazard Ident. & Regulatory Tox <i>Amaya Azqueta, UNAV (ES)</i> 09:45-10:45 Dose-response BMD <i>George Johnson, Swansea University (UK)</i>	09:00-09:45 Susceptibility <i>Roger Godschalk, UM (NL)</i> 09:45-10:30 Risk Characterisation <i>Ariane Vettorazzi, UNAV (ES)</i>	09:00-09:45 Risk Management of Radiation Exposure <i>Geert Biermans, FANC (BE)</i> 09:45-10:30 Risk Communication <i>Ree Meertens, UM (NL)</i>	Closing lecture Feedback	
		Visit ECOTRON U Hasselt	COFFEE BREAK (11:00-11:30) 11:30-12:15 Translational Toxicology <i>Roger Godschalk, UM (BE)</i> 12:15-13:00 Role of Epidemiology <i>Stefano Bonassi, IRCCS San Raffaele Pisana (IT)</i>	Visit SCK CEN (Belgian Nuclear Research Centre)	COFFEE BREAK (10:45-11:15)	COFFEE BREAK (10:30-11:00)	COFFEE BREAK (10:30-11:00)		
		LUNCH	LUNCH (13:00-14:00)	LUNCH (12h30-13h30)	LUNCH (13:00-14:00)	LUNCH (13:00-14:00)	LUNCH (13:00-14:00)		
PM	A R R I V A L	14:30 Social activity in Hasselt city centre	14:00-15:00 Risk Assessment Radiation <i>Nele Horemans, SCK (BE)</i> 15:00-16:00 Air pollution <i>David Elustondo Valencia, UNAV</i>	14:00-16:00 Visit VITO <i>(Air pollution modelling)</i>	14:00-14:30 Mycotoxins <i>Ariane Vettorazzi, UNAV (ES)</i>	14:00-14:30 Cultured proteins <i>Vaios Fytzilis, UM (NL)</i>	14:00-15:00 Press conference group presentations		
			Introducing Problem-Based Learning (PBL) <i>Roger Godschalk, UM (NL)</i>		COFFEE BREAK	Work on PBL cases	COFFEE BREAK	Work on PBL cases	15:30-tbc Press conference group presentations
			COFFEE BREAK	Work on PBL cases	(return to Hasselt 16:30)				General discussion
Evening		Get together							

Visit to ECOTRON 30/6

<https://www.uhasselt.be/en/instituten-en/cmck-centre-for-environmental-sciences/infrastructure/ecotron>

The bus will leave from Holiday Inn Express at 8h.

Lunch will be provided at ECOTRON

We will travel back via public transport to Hasselt city centre for a social activity with the group. This will give you the opportunity to get to know the city and the other attendees.



Visit to SCK and VITO 2/7

<https://www.sckcen.be/en>

<https://vito.be/en>

The bus leaves at 7:30h at Holiday Inn Express.

In the morning we will visit HADES. HADES is the underground lab at the **SCK CEN site** in Mol. Here, scientists have been conducting research into geological disposal of long-lived and/or high-level waste for 40 years, 225 metres deep in the Boom Clay.

<https://www.sckcen.be/en/infrastructure/hades>

Lunch will be provided at Nuclea, at walking distance from SCK.

From 14h onwards we will visit **VITO – Health**, where we will learn more about the various ways of assessing exposure to air pollution and testing exposure effects. It will be a mix of lab visits and lectures:

- 14u00-14u30: Lab visit to show the in vitro ALI model – by Evelyn Frijns
- 14u30-15u00: Climate – heat mortality and application of Urb-clim model – by Els Verachtert
- 15u00-15u30: Lab visit TEH and demo of personal black carbon monitors
- 15u30-16u00: Research lecture about the application of Atmo-street model – by Wouter Lefebvre

<https://vito.be/en/subtheme/air-climate>

